



envirovent®

Because Air Matters



energisava 380



THE QUEEN'S AWARDS  
FOR ENTERPRISE:  
INNOVATION  
2009

The most flexible installation around

# energiSava

high efficiency  
modular  
MVHR

# 380

- energy efficient
- extremely quiet
- ultra flexible
- modular



5  
YEAR  
WARRANTY



MADE IN THE  
UK



APPENDIX C  
ELIGIBLE

# Unique Modular System

After extensive research and testing, EnviroVent have recognised and overcome the complexities of heat recovery installation to design a unique, modular, 2-in-1 whole house system called the energisava 380.



## Introduction

Delivering not only the utmost practicality in installation flexibility, the system also performs to the highest efficiency on SAP Appendix Q and achieves a low Specific Fan Power of 0.40 W/l/s.

Recovering up to 93% of heat, the energisava 380 reduces carbon emissions whilst providing continuous, all year round good indoor air quality.

## Features & Benefits

- Thermal efficiency up to 93%
- Specific Fan Power as low as 0.40 W/l/s
- EST Best Practice Performance Compliant
- Suitable for up to kitchen + 7 additional wet rooms
- Lightweight, one-man installation
- Compact modular format, easy to fit through standard loft hatches
- Fan unit can be rotated for utmost practicality
- Switch live input and frost protection as standard
- Optional summer by-pass (available Summer 2013)
- Easy to remove plug in/plug out filters
- Easy removable fan section and electronics
- Part of the Lifetime Range® complete with 5 year warranty

5

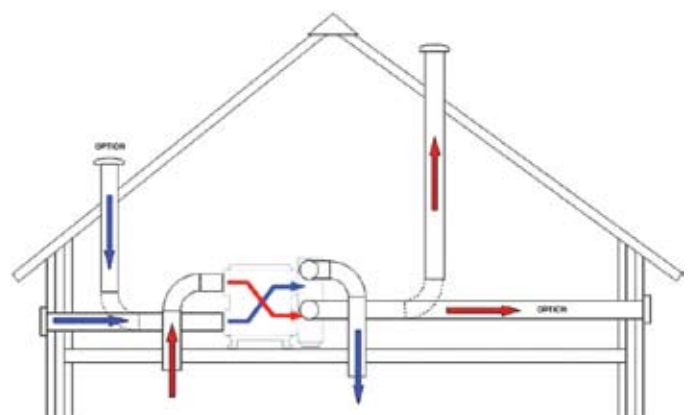
Five year warranty



Made in the UK

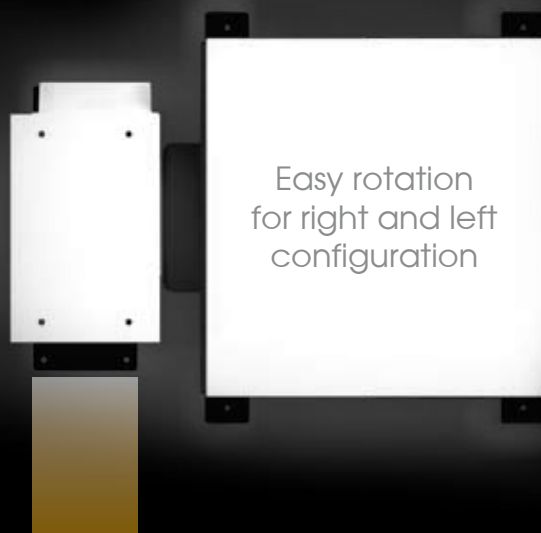


SAP Q eligible



## Most flexible installation around

The energiSava 380 has been designed specifically for ease of installation in a unique modular format to fit through a standard loft hatch and provide optimum flexibility, making life easier.



## Optimum Flexibility

The energiSava 380 incorporates two modules: The dual functioning twin fan extraction and input module; and the ultra efficient heat exchange module.

The lightweight and very compact format allows for a one-man installation and the system is designed for easy push-button commissioning. It can also be rotated to enable both right and left configurations depending on the type of installation required.

## Rapid Maintenance

As part of the Lifetime Range®, the system comes complete with a 5 year warranty. It incorporates plug in/plug out G4 filters for ease of maintenance.

Other internal components can be serviced easily such as the fan section and electronics.



## Amazingly Powerful

Suitable for properties with kitchen plus 7 wet rooms, the energiSava 380 is not only exceptionally powerful, delivering a maximum airflow of 120 l/s but is also highly efficient achieving a thermal efficiency of 93% and SFP as low as 0.40 W/l/s.

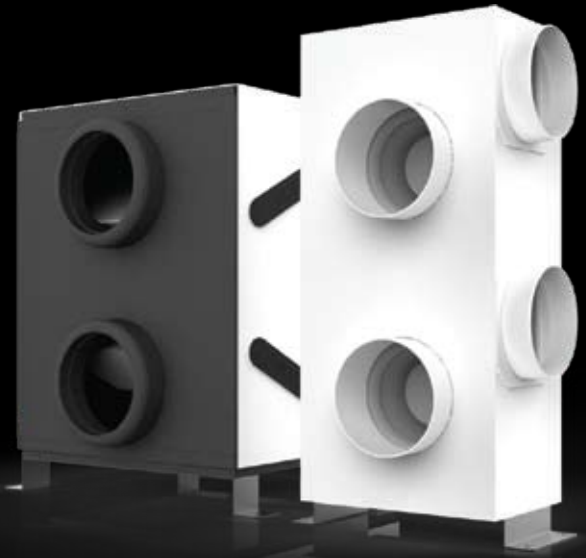


# Superior Performance

**0.40**  
Specific Fan Power  
(W/l/s)

**120**  
maximum airflow  
(l/s)

**93**  
thermal efficiency  
(%)



## Controls



The system runs continuously on trickle, providing all year round healthy indoor air quality. No user intervention is required as the intelligent humidity tracking controls constantly monitors the average humidity level over a two minute period. This allows the system to sense any rise in humidity and increase the extract rate in direct correlation to quietly and efficiently control condensation. Even at night time the system has been engineered to prevent noisy running, it also incorporates a frost protection facility which monitors the temperature of the heat exchange cell. When the temperature drops below 5C the system will automatically revert to an extract-only mode, which blows warmer air through the cell, preventing the formation of frost and ensuring optimum efficiency.

### Additional functions

The system can be installed with PIR for presence detection and absence mode as optional extras.



### Manual Boost

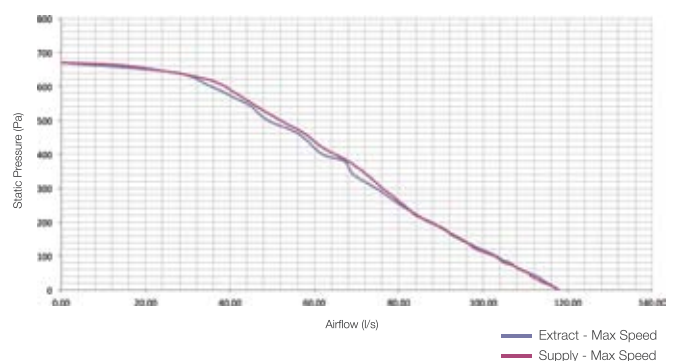
For manual boost operation, a hard-wired boost switch comes as standard with the system. An optional remote controlled boost switch is also available.



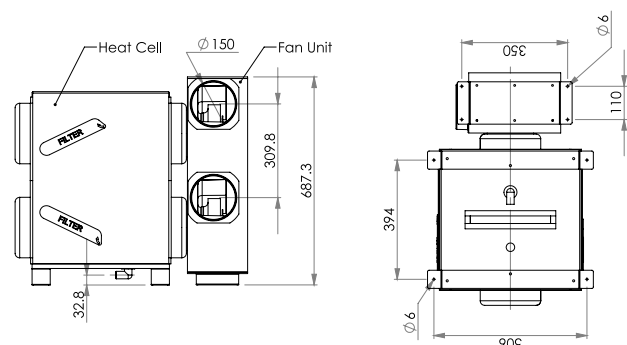
## SAP Appendix Q Performance

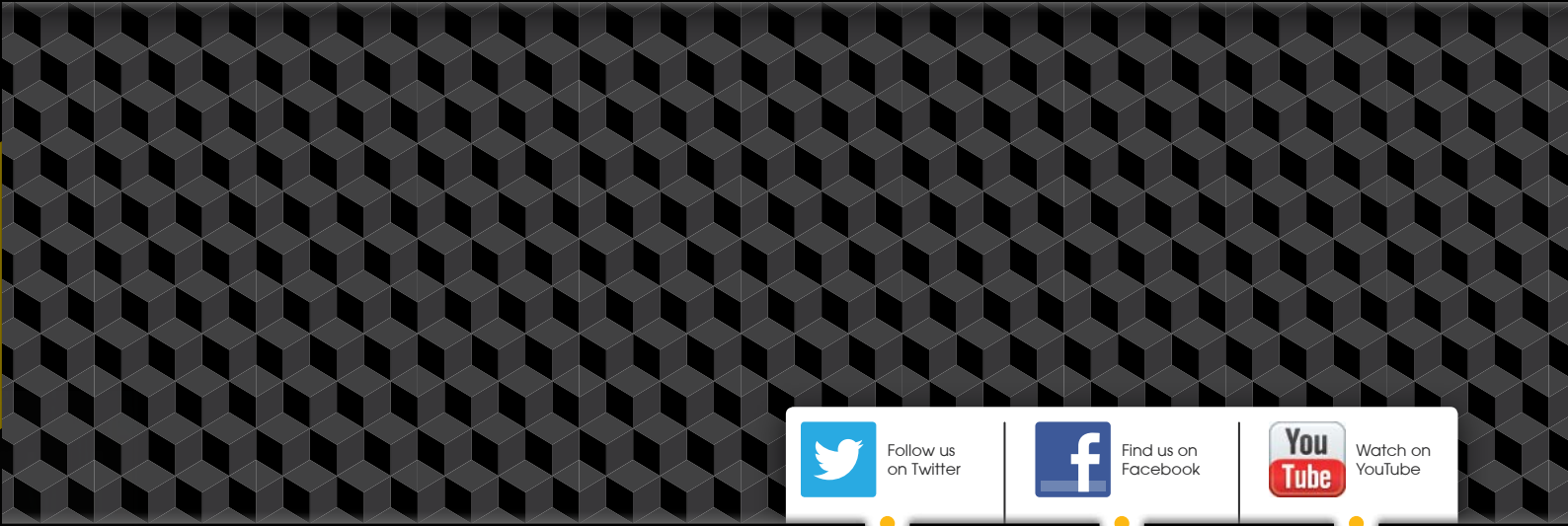
Systems with rigid ductwork only						
Exhaust Terminal Configuration - Kitchen + Additional Wet Rooms	Fan Speed Setting	Total Supply Flow Rate (l/s)	Total Exhaust Flow Rate (l/s)	Specific Fan Power (W/l/s)	Heat Exchange Efficiency (%)	EST Best Practice Performance Compliant
+ 1 additional wet room	100% Variable	15.0	15.0	0.42	93	Yes
+ 2 additional wet rooms	100% Variable	21.0	21.0	0.40	93	Yes
+ 3 additional wet rooms	100% Variable	27.0	27.0	0.44	92	Yes
+ 4 additional wet rooms	100% Variable	33.0	33.0	0.51	92	Yes
+ 5 additional wet rooms	100% Variable	39.0	39.0	0.59	91	Yes
+ 6 additional wet rooms	100% Variable	45.0	45.0	0.70	89	Yes
+ 7 additional wet rooms	100% Variable	51.0	51.0	0.82	89	Yes

## Performance Curve



## Dimensions





Follow us on Twitter



Find us on Facebook



Watch on YouTube

# envirovent®

Leaders in the manufacture of innovative and sustainable ventilation

EnviroVent Ltd  
EnviroVent House  
Hornbeam Business Park  
Harrogate  
HG2 8PA

T / 01423 810 810  
F / 01423 810 910  
E / [info@envirovent.com](mailto:info@envirovent.com)  
W / [envirovent.com](http://envirovent.com)

Due to our policy of continuous innovation and improvement, EnviroVent reserves the right to alter products specification and appearance without notice.  
E&OE | MKT ENVXXX-V1-XX.XX.XX

