

Titon FireSafe® Range

Ventilation Systems



 **Titon®**

THE ORIGINAL

LOW RESISTANCE METAL AIR BRICK



The award winning Titon FireSafe® Air Brick Range is a unique high flow terminal designed for powered ventilation systems offering low resistance to airflow, but high resistance to fire as set out in Approved Document B (fire safety) volume 1: Dwellings, 2019 edition. Constructed from sheet steel (A1) and polyester powder coated to classification A2-s1, d0. The Titon FireSafe® Air Brick is designed to be built into external wall types during construction.

- Material 1mm electrogalvanized sheet steel, fire class A1 'no contribution to fire'
- Designed for both 204x60 & 220x90 ducting
- Bezelled version for use with exterior cladding instead of brickwork
- Extensive versatile range for different installation options
- Optional lengths available at request
- Polyester powder coating meeting EN13501-1 classification A2-s1,d0
- Performance tested to BS EN13141-2:2010
- Corrosion resistance - salt spray tested to BS EN ISO 9227:2012
- Special paint finishes available depending on quantity
- Compatible with thermal and rigid ducting

A manufacturer you can BUILD a relationship with....

Visit our dedicated website at:
titon.com/firesafe

t: 01206 713800 e: marketing@titon.co.uk



 **Titon®**

Titon FireSafe® - Single Air Brick

For use with Titon's HRV Q Plus and CME Q Plus Ranges

The new Titon FireSafe® Air Brick Range is a unique high flow terminal designed for powered ventilation systems offering low resistance to airflow, but high resistance to fire as set out in Approved Document B (fire safety) volume 1: Dwellings, 2019 edition. Constructed from sheet steel (A1) and polyester powder coated to classification A2-s1, d0.

The Titon FireSafe® Air Brick is designed to be built into external wall types during construction. The range consists of short and long versions and can easily be connected to both 204x60 and 220x90 rectangular ducting.

Description

Titon FireSafe® Single Air Brick



Product Codes

- TA360** - Titon FireSafe® Air Brick 204x60x100
- TA361** - Titon FireSafe® Air Brick 204x60x100 Bezelled
- TA370** - Titon FireSafe® Air Brick 204x60x400
- TA371** - Titon FireSafe® Air Brick 204x60x400 Bezelled
- TA380** - Titon FireSafe® Air Brick 330x60x100
- TA381** - Titon FireSafe® Air Brick 330x60x100 Bezelled
- TA390** - Titon FireSafe® Air Brick 330x60x400
- TA391** - Titon FireSafe® Air Brick 330x60x400 Bezelled
- TA392** - Titon FireSafe® Air Brick 330x60x500
- TA393** - Titon FireSafe® Air Brick 330x60x500 Bezelled

Accessories

- TA362** - Metal 45° Bend 204x60
- TA382** - Metal 45° Bend 330x60
- TA383** - Metal Transition 330x60 to 220x90
- TA385** - Metal Transition 330x60 to 220x90 Flat Top Profile
- TA363** - Metal Sleeve 204x60x200
- TA384** - Metal Sleeve 220x90x400

Features & Benefits

- Polyester Powder Coating meeting EN13501-1 classification A2-s1,d0
- Material 1mm Electrogalvanized Sheet Steel, fire class A1 'no contribution to fire'
- Equivalent to many brick sized grilles and additional brick and half size option
- Designed for both 204x60 & 220x90 ducting
- Bezelled version for use with exterior cladding instead of brickwork
- Complies with the latest standard as set out in Approved Document B (fire safety) volume 1: Dwellings, 2019 edition
- High flow terminal designed for powered ventilation systems offering low resistance to airflow and high resistance to fire
- Extensive versatile range for different installation options
- Registered Design
- Also available in Double brick (204x128) option
- Special paint finishes available depending on quantity
- Performance tested to BS EN13141-2:2010
- Corrosion resistance - salt spray tested to BS EN ISO 9227:2012
- Optional lengths available at request
- Compatible with thermal and rigid ducting

Specification

Materials:

Steel Electrolytically Zinc Coated (BS EN 10152 DC01 ZE25/25)

Paint:

Powder Coated (A2-s1, d0 classification to EN 13501-1)

Registered Design

- TA360** - Registered Design No 6067647
- TA370** - Registered Design No 6067645
- TA380** - Registered Design No 6067648
- TA390** - Registered Design No 6067646
- TA392** - Registered Design No 6067646

Finishes: Terracotta, Sand, Grey, White or Brown

Colour Reference (add to end of part number)

/023 - Brown (Semi-gloss RAL 8017)

/086 - Terracotta (Matt RAL 8004)

/151 - White (Matt RAL 9010)

/397 - Grey (Matt RAL 7012)

/626 - Sand (Matt RAL 1001)

Installation:

Install in accordance with Residential Ventilation Association Good Practice recommendations – details on request.

Maintenance: Wipe with a damp cloth and remove any blockages on a regular basis.

Free Area:

Small Air Bricks

TA360, TA361, TA370 & TA371

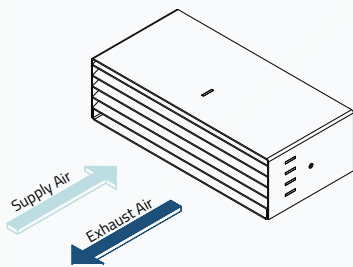
Titon FireSafe® Air Brick AAO = 10089 mm²

Large Air Bricks

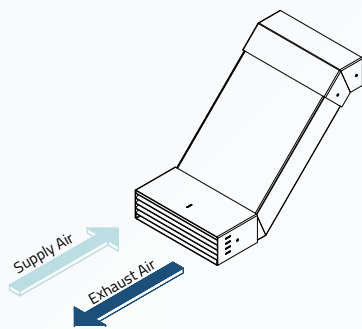
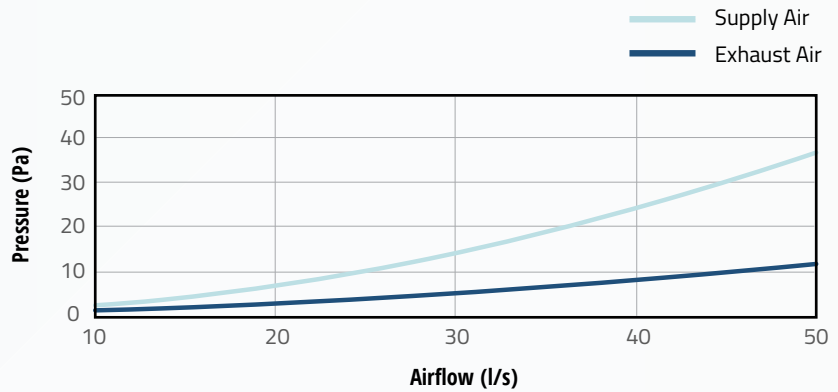
TA380, TA381, TA390, TA391, TA392 & TA393

Titon FireSafe® Air Brick AAO = 16060 mm²

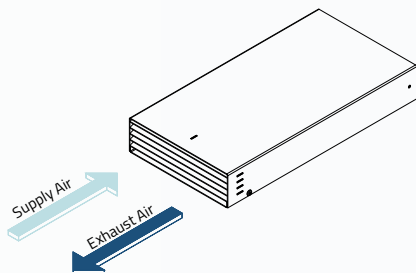
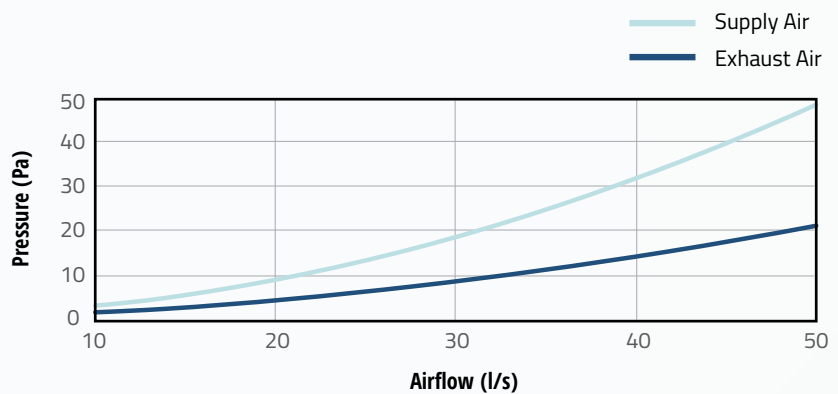
High Flow Terminal Resistance - 204x60x100/400



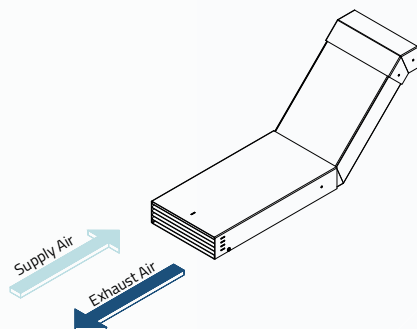
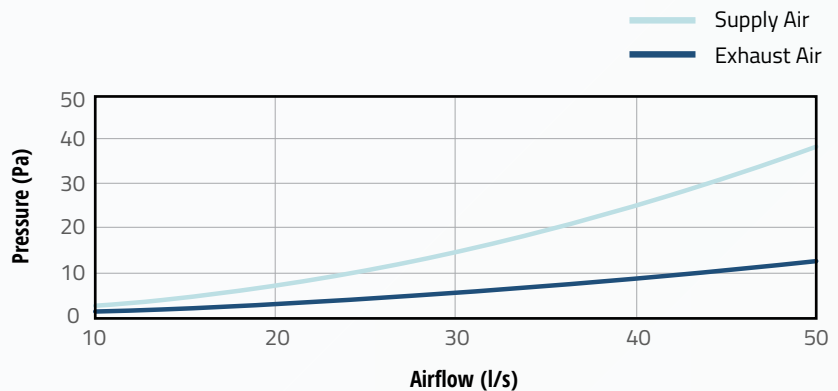
TA360 - Titon FireSafe® Air Brick 204x60x100/
TA361 - Titon FireSafe® Air Brick 204x60x100 Bezelled



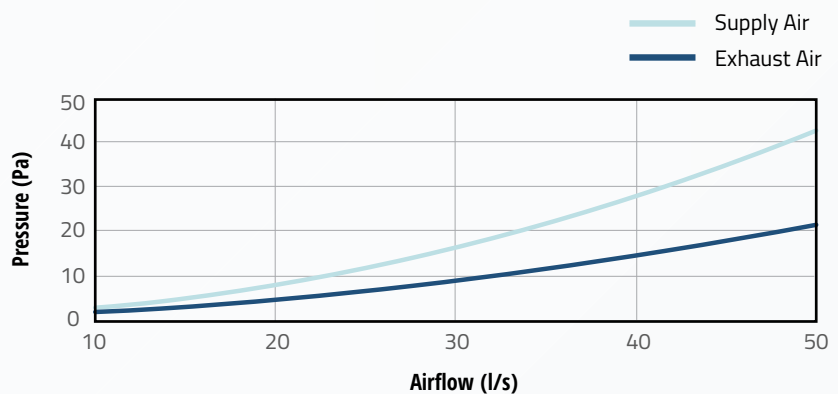
TA360 - Titon FireSafe® Air Brick 204x60x100/
TA361 - Titon FireSafe® Air Brick 204x60x100 Bezelled
with **TA362** - Titon FireSafe® Air Brick 45° Bend 204x60
*Resistance curve - air brick and accessory combined.



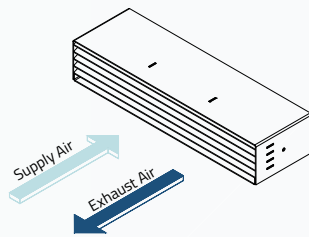
TA370 - Titon FireSafe® Air Brick 204x60x400/
TA371 - Titon FireSafe® Air Brick 204x60x400 Bezelled



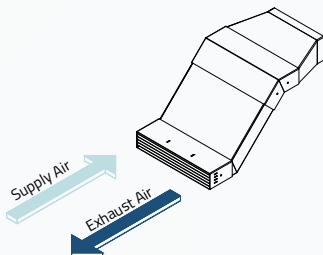
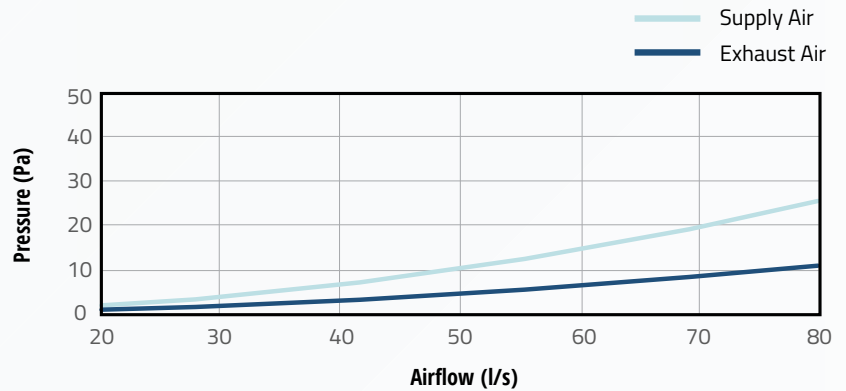
TA370 - Titon FireSafe® Air Brick 204x60x400/
TA371 - Titon FireSafe® Air Brick 204x60x400 Bezelled
with **TA362** - Titon FireSafe® Air Brick 45° Bend 204x60
*Resistance curve - air brick and accessory combined.



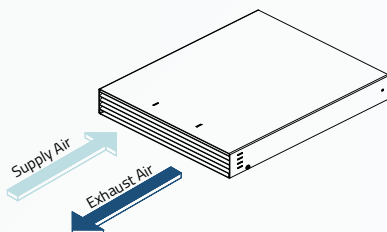
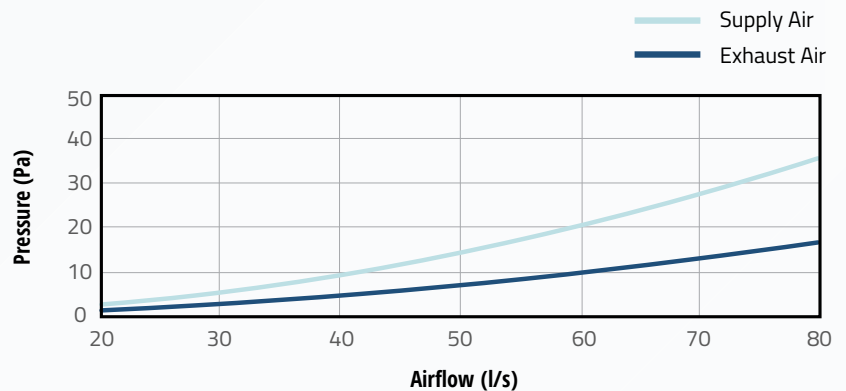
High Flow Terminal Resistance - 330x60x100/400/500



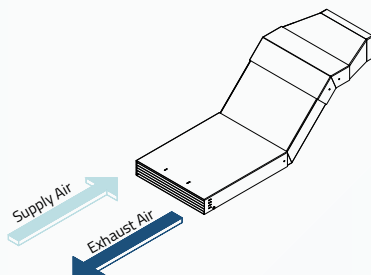
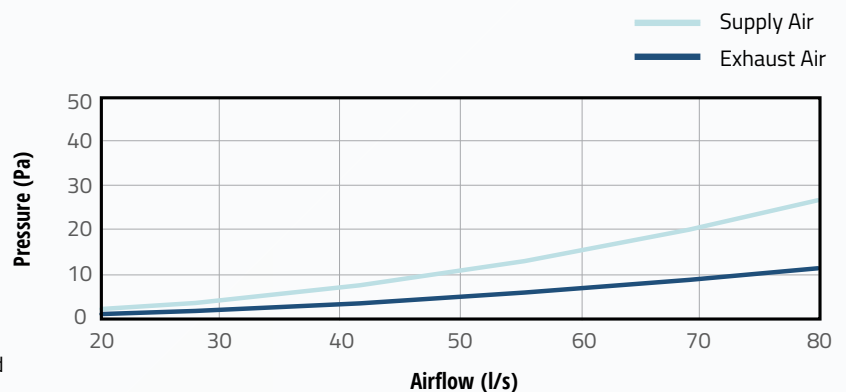
TA380 - Titon FireSafe® Air Brick 330x60x100/
TA381 - Titon FireSafe® Air Brick 330x60x100 Bezelled



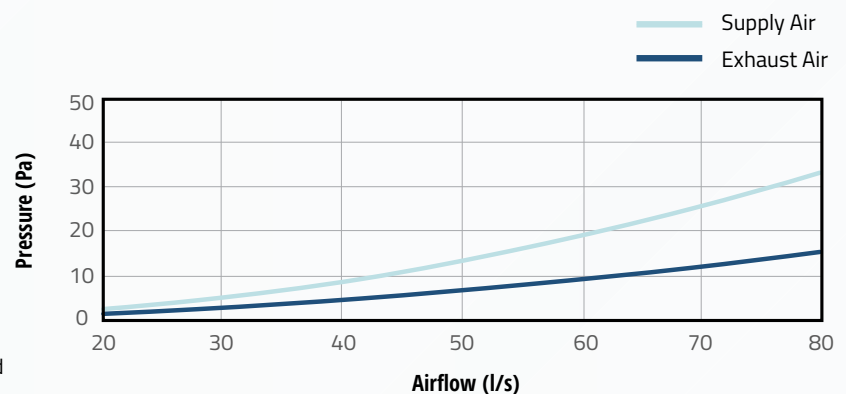
TA380 - Titon FireSafe® Air Brick 330x60x100/
TA381 - Titon FireSafe® Air Brick 330x60x100 Bezelled with **TA382** - 45° Bend 330x60 and
TA383 - Transition 330x60 to 220x90
TA385 - Transition 330x60 to 220x90 Flat Top Profile
 *Resistance curve - air brick and accessory combined.



TA390 - Titon FireSafe® Air Brick 330x60x400/
TA391 - Titon FireSafe® Air Brick 330x60x400 Bezelled
TA392 - Titon FireSafe® Air Brick 330x60x500/
TA393 - Titon FireSafe® Air Brick 330x60x500 Bezelled

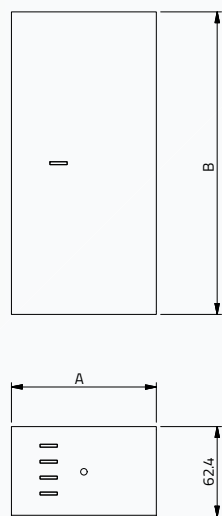


TA390 - Titon FireSafe® Air Brick 330x60x400/
TA391 - Titon FireSafe® Air Brick 330x60x400 Bezelled
TA392 - Titon FireSafe® Air Brick 330x60x500/
TA393 - Titon FireSafe® Air Brick 330x60x500 Bezelled
 With **TA382** - 45° Bend 330x60 and
TA383 - Transition 330x60 to 220x90
 *Resistance curve - air brick and accessory combined.



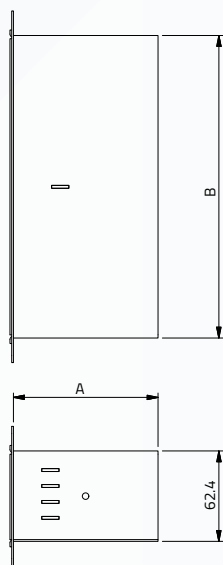
Drawings & Dimensions

TA360, TA370, TA380, TA390 & TA392 - Titon FireSafe® Air Brick



Product Size	Part Number	A	B	Weight (Kg)
204x60x100	TA360	100	208.8	1.2
204x60x400	TA370	400	208.8	3.0
330x60x100	TA380	100	330	1.8
330x60x400	TA390	400	330	4.3
330x60x500	TA392	500	330	5.2

TA361, TA371, TA381, TA391 & TA393 - Titon FireSafe® Air Brick Bezel

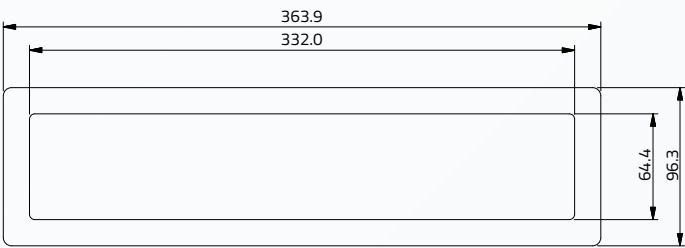
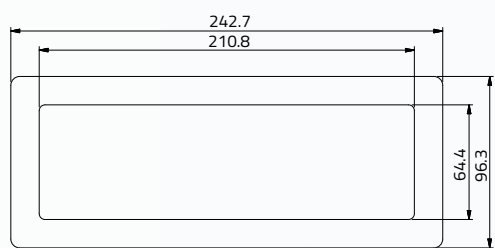


Product Size	Part Number	A	B	Weight (kg)
204x60x100	TA361	100	208.8	1.3
204x60x400	TA371	400	208.8	3.1
330x60x100	TA381	100	330	2
330x60x400	TA391	400	330	4.5
330x60x500	TA393	500	330	5.4

Bezel

204x60

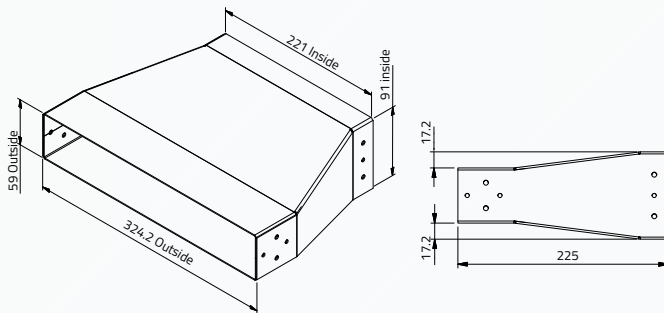
330x60 Version



Drawings & Dimensions

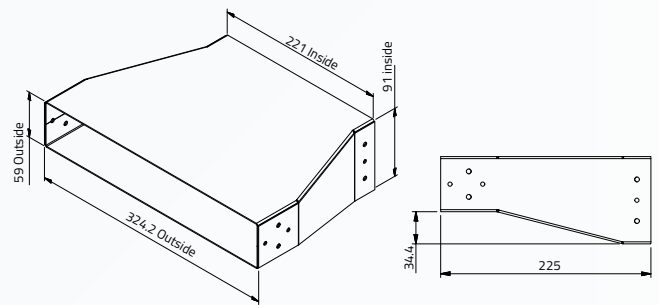
TA383 - Transition 330x60 to 220x90

Weight - 1.5kg



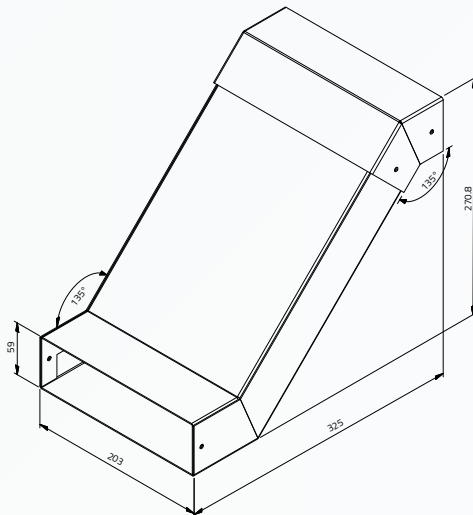
TA385 - Transition 330x60 to 220x90 Flat Top Profile

Weight - 1.5kg



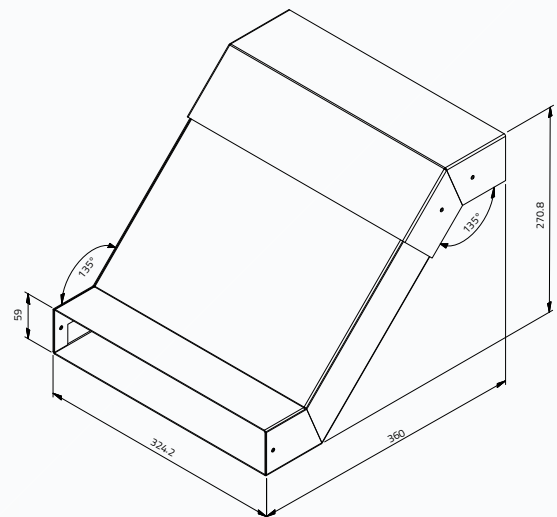
TA362 - 45° Bend 204x60

Weight - 2.7kg



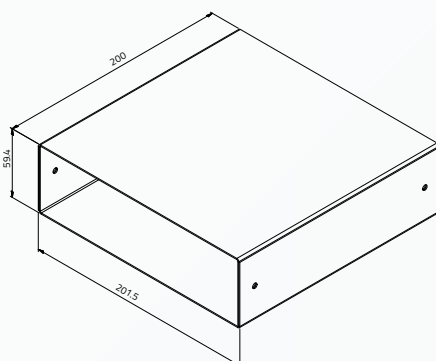
TA382 - 45° Bend 330x60

Weight - 3.7kg



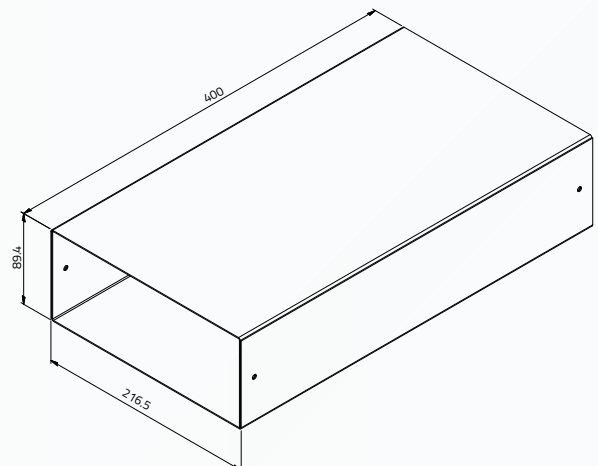
TA363 - Metal Sleeve 204x60x200

Weight - 1kg



TA384 - Metal Sleeve 220x90x400

Weight - 2.5kg



Titon FireSafe® - Double Air Brick

For use with Titon's HRV Q Plus and CME Q Plus Ranges

The new Titon FireSafe® Air Brick Range is a unique high flow terminal designed for powered ventilation systems offering low resistance to airflow, but high resistance to fire as set out in Approved Document B (fire safety) volume 1: Dwellings, 2019 edition. Constructed from sheet steel (A1) and polyester powder coated to classification A2-s1, d0.

The Titon FireSafe® Air Brick is designed to be built into external wall types during construction. The range consists of short and long versions and can easily be connected to 220x90 rectangular ducting.

Description

Titon FireSafe® Double Air Brick

FireSafe



Product Codes

TA364 - Titon FireSafe® Air Brick 204x128x100/

TA365 - Titon FireSafe® Air Brick 204x128x100 Bezelled

TA372 - Titon FireSafe® Air Brick 204x128x400/

TA373 - Titon FireSafe® Air Brick 204x128x400 Bezelled

TA374 - Titon FireSafe® Air Brick 204x128x500/

TA375 - Titon FireSafe® Air Brick 204x128x500 Bezelled

Accessories

TA366 - Transition 204x128 to 220x90

TA384 - Metal Sleeve 220x90x400

Features & Benefits

- Polyester Powder Coating meeting EN13501-1 classification A2-s1, d0
- Material 1mm Electrogalvanized Sheet Steel, fire class A1 'no contribution to fire'
- Designed for 220x90 ducting
- Bezelled version for use with exterior cladding instead of brickwork
- Complies with the latest standard as set out in Approved Document B (fire safety) volume 1: Dwellings, 2019 edition
- High flow terminal designed for powered ventilation systems offering low resistance to airflow and high resistance to fire
- Extensive versatile range for different installation options
- Registered Design
- Also available in Single brick (204x60 and 330x60) options
- Special paint finishes available depending on quantity
- Performance tested to BS EN13141-2:2010
- Corrosion resistance - salt spray tested to BS EN ISO 9227:2012
- Optional lengths available at request
- Compatible with thermal and rigid ducting

Specification

Materials:

Steel Electrolytically Zinc Coated (BS EN 10152 DC01 ZE25/25)

Paint:

Powder Coated (A2-s1, d0 classification to EN 13501-1)

Registered Design

TA364 - Registered Design No 6080907

TA372 - Registered Design No 6080908

TA374 - Registered Design No 6080908

Finishes: Terracotta, Sand, Grey, White or Brown

Colour Reference (add to end of part number)

/023 - Brown (Semi-gloss RAL 8017)

/086 - Terracotta (Matt RAL 8004)

/151 - White (Matt RAL 9010)

/397 - Grey (Matt RAL 7012)

/626 - Sand (Matt RAL 1001)

Installation:

Install in accordance with Residential Ventilation Association Good Practice recommendations – details on request.

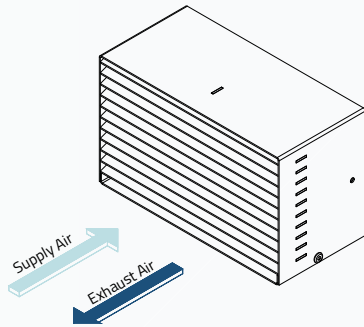
Maintenance: Wipe with a damp cloth and remove any blockages on a regular basis.

Free Area:

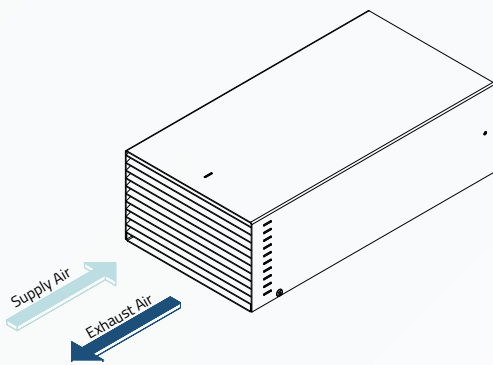
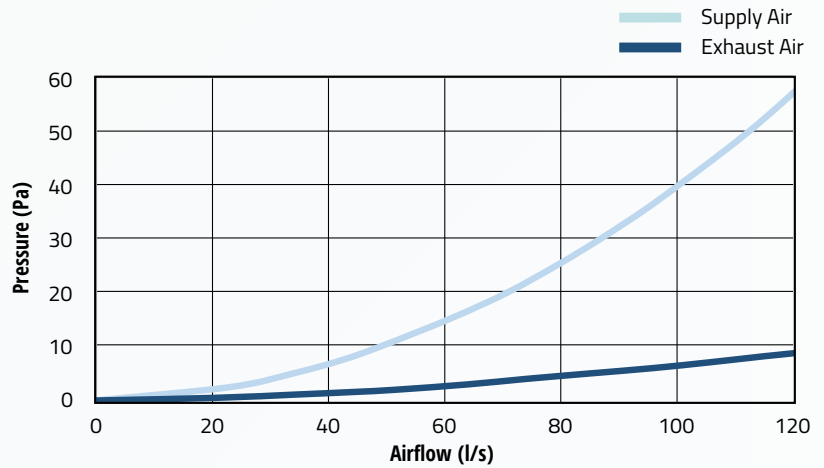
TA364, TA365, TA372, TA373, TA374 & TA375

Titon FireSafe® Air Brick AAO = 20,111 mm²

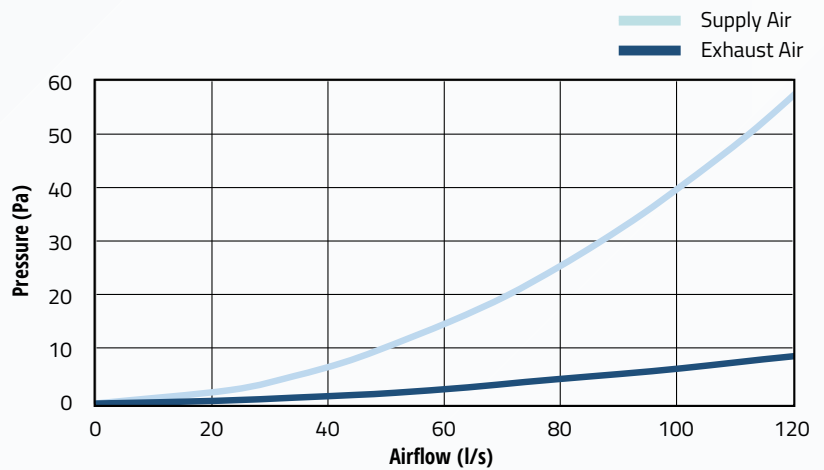
High Flow Terminal Resistance - 204x128x100/400/500



TA364 – Titon FireSafe® Air Brick 204x128x100/
TA365 – Titon FireSafe® Air Brick 204x128x100 Bezelled
 With
TA366 – Transition 204x128 to 220x90
 *Resistance curve - air brick and accessory combined.



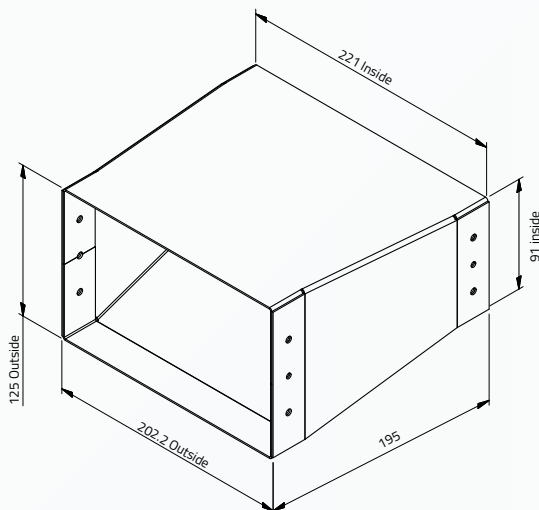
TA372 – Titon FireSafe® Air Brick 204x128x400/
TA373 – Titon FireSafe® Air Brick 204x128x400 Bezelled
TA374 – Titon FireSafe® Air Brick 204x128x500/
TA375 – Titon FireSafe® Air Brick 204x128x500 Bezelled
 With
TA366 - Transition 204x128 to 220x90~
 *Resistance curve - air brick and accessory combined.



Drawings & Dimensions

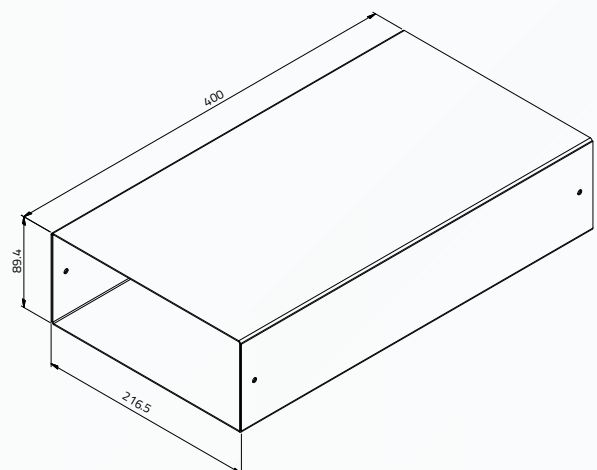
TA366 - Transition 204x128 to 220x90

Weight - 1.4kg



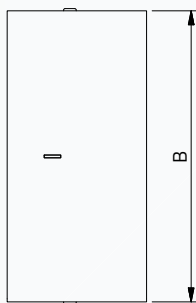
TA384 - Metal Sleeve 220x90x400

Weight - 2.5kg

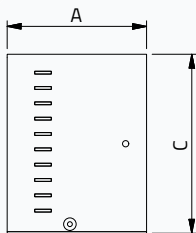


Drawings & Dimensions

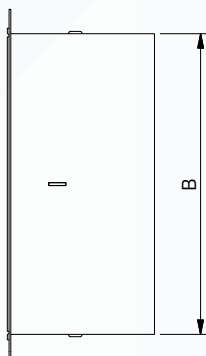
TA364, TA372, TA374 - Titon FireSafe® Double Air Brick



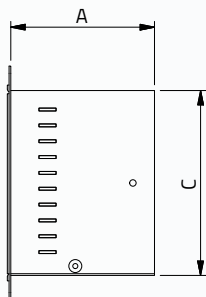
Product Size	Part Number	A	B	C	Weight (Kg)
204x128x100	TA364	100	209	129	2.2
204x128x400	TA372	400	209	129	4.8
204x128x500	TA374	500	209	129	5.7



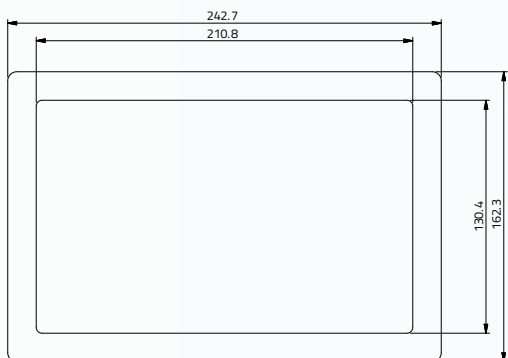
TA365, TA373, TA375 - Titon FireSafe® Double Air Brick Bezel



Product Size	Part Number	A	B	C	Weight (Kg)
204x128x100	TA365	100	209	129	2.4
204x128x400	TA373	400	209	129	5
204x128x500	TA375	500	209	129	5.8



Bezel - 204x128



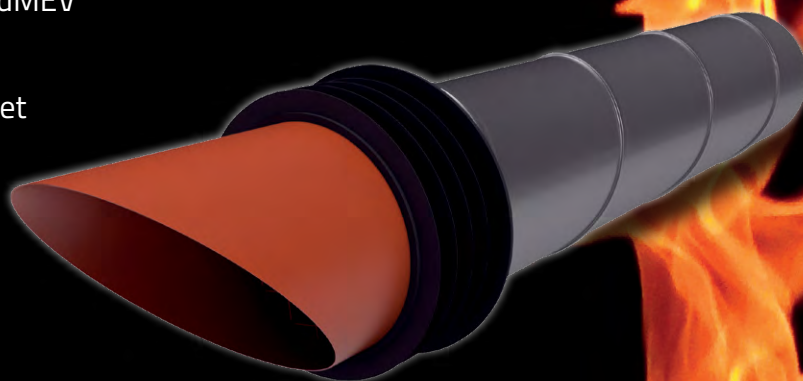
Titon FireSafe® 100mm Push Through Wall Kit

Titon has extended its market leading Titon FireSafe® range by adding the new Titon FireSafe® 100mm Push Through Wall Kit, a superior circular fire safe terminal that assists in removing the dangers offered by plastic grilles and ducting in mechanical ventilation systems.

The Titon FireSafe® 100mm Push Through Wall Kit offers low resistance to airflow, but high resistance to fire as set out in Approved Document B (fire safety) volume 1: Dwellings, 2019 edition. Ideal for residential new build, refurbishment and social housing applications where mould and condensation cause are a major problem.

Key Features

- › Easy to install and can be cut to desired length on site
- › Performance tested to BS EN13141-2:2010
- › Designed for installation with Titon Ultimate® dMEV
- › Material 0.6mm electrogalvanized sheet steel, fire class A1 'no contribution to fire'
- › Terminal polyester powder coating meeting EN13501-1 classification A2-s1,d0
- › Corrosion resistance - salt spray tested to BS EN ISO 9227:2012



Non-Combustible
as set out in
Part B

Low
Resistances

A manufacturer you can BUILD a relationship with....

Visit our dedicated website at:

titon.com/firesafe

t: 01206 713800 e: marketing@titon.co.uk



 **Titon®**

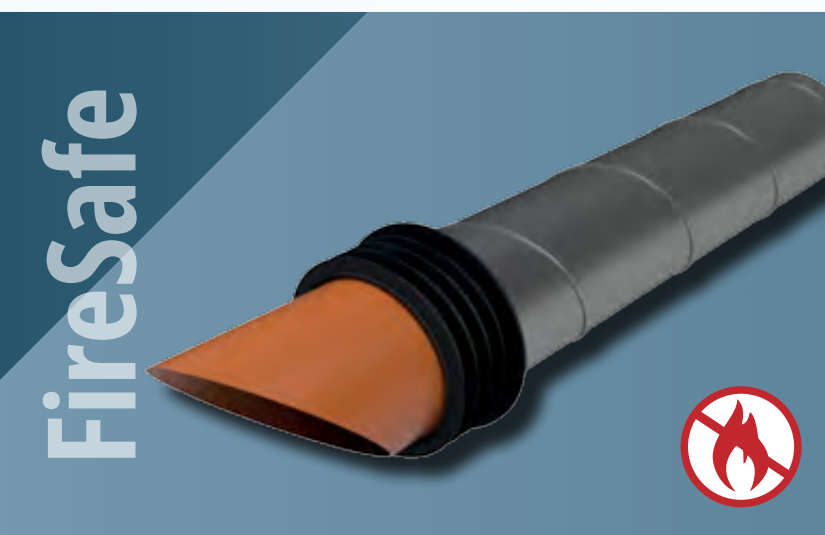
Titon FireSafe® - 100mm Push Through Wall Kit

For use with Titon's dMEV and CME Q Plus Ranges

The **new** Titon FireSafe® 100mm Push Through Wall Kit is a circular high flow terminal designed for powered ventilation systems offering low resistance to airflow, but high resistance to fire as set out in Approved Document B (fire safety) volume 1: Dwellings, 2019 edition.

Ideal for new build, refurbishment and social housing residential applications, it is constructed from sheet steel (A1) and polyester powder coated to classification A2-s1, d0.

Titon FireSafe® 100mm Push Through Wall Kit is designed to be installed from the inside of the dwelling and will create a seal to the external wall. The range consists of a Ø100 round version at 630mm long.



Description

Titon FireSafe® 100mm Push Through Wall Kit

Product Codes

TA425 - Titon FireSafe® 100mm Push Through Wall Kit, Ø100 and 630mm long

Specification

Materials:

Hot Dipped Galvanised Steel

Paint:

Powder Coated (A2-s1, d0 classification to EN 13501-1)

Rubber Gasket: Thermoplastic Elastomer (TPE)

Finishes: Terracotta and White*

Colour Reference (add to end of part number)

/086 - Terracotta (Matt RAL 8004)

/151 - White (Matt RAL 9010)

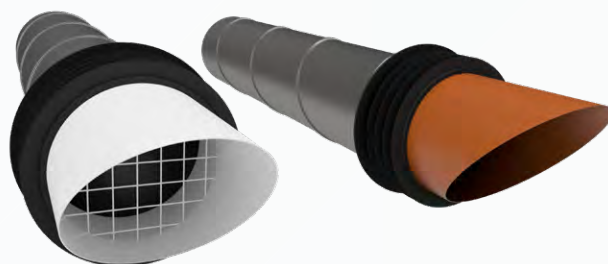
*Terminal only (excluding ducting) and other colours available at request.

Features & Benefits

- Material 0.6 – 1.0mm hot dipped galvanised sheet, fire class A1 'no contribution to fire'
- Polyester powder coating meeting EN13501-1 classification A2-s1,d0
- Ideal for retrofit where mould and condensation are a major problem
- Designed for installation with Titon Ultimate® dMEV
- Can be cut to desired wall thickness
- Performance tested to BS EN13141-2:2010
- Corrosion resistance - salt spray tested to BS EN ISO 9227:2012
- Special paint finishes available depending on quantity
- Compatible with thermal and rigid ducting
- Compatible with Titon's range of MEV fans
- Rubber round gasket to seal with external wall
- Complies with the latest standard as set out in Approved Document B (fire safety) volume 1: Dwellings, 2019 edition
- High flow terminal designed for powered ventilation systems offering low resistance to airflow and high resistance to fire



Titon Ultimate® dMEV



Installation:

Install in accordance with Residential Ventilation Association Good Practice recommendations – details on request.

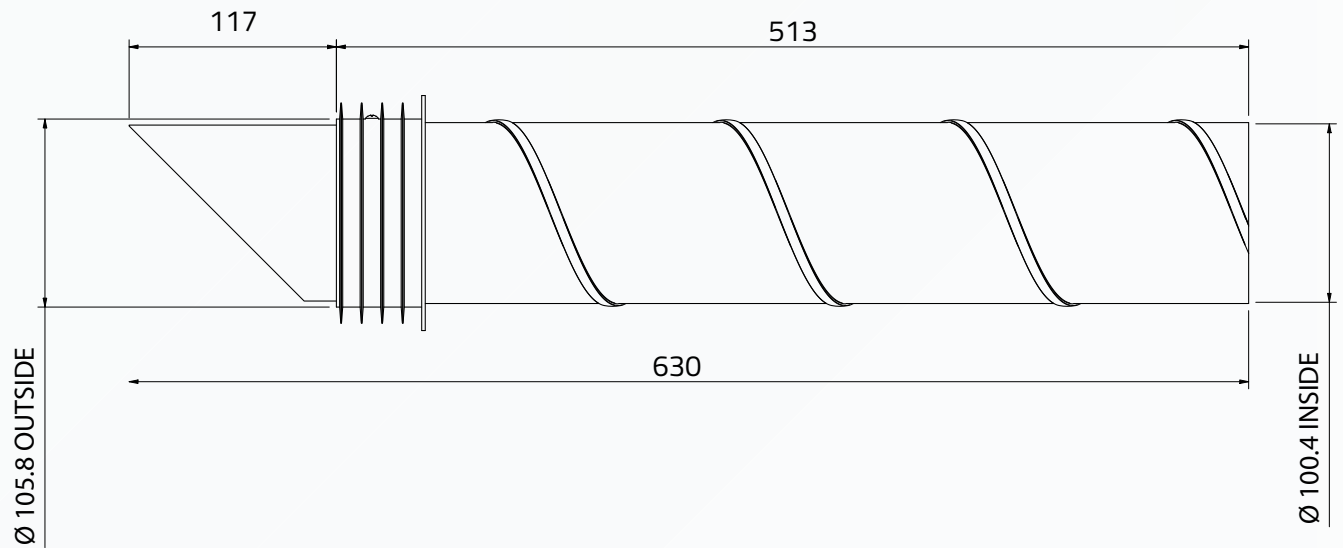
Maintenance: Wipe with a damp cloth and remove any blockages on a regular basis.

Free Area:

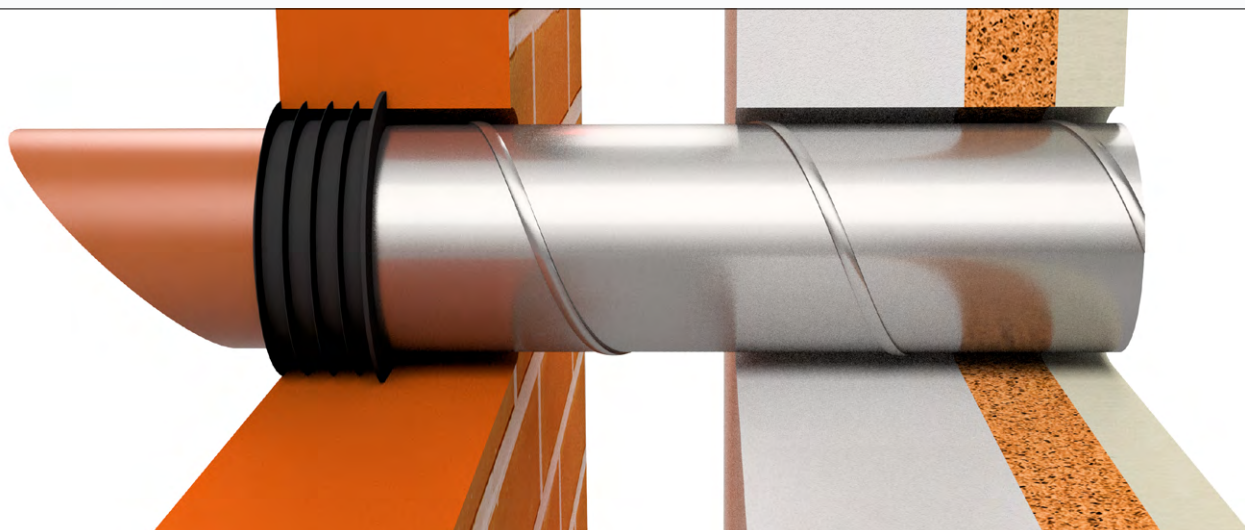
AAO = 6174 mm²

Drawings & Dimensions

TA425 - Titon FireSafe® 100mm Push Through Wall Kit

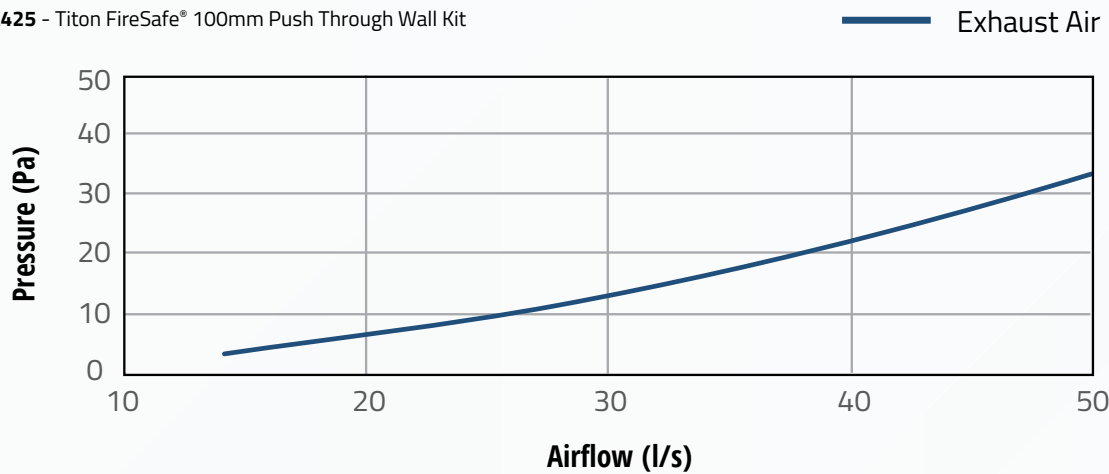


Dimensions in mm



High Flow Terminal Resistance

TA425 - Titon FireSafe® 100mm Push Through Wall Kit



Mechanical Ventilation Heat Recovery (MVHR)

Titon's range of MVHR is the perfect solution for mechanical ventilation heat recovery systems. Offering an extensive air flow range to support any residential design.

- Heat recovery rates up to 92%
- Airflow up to 178 l/s (640 m³/h)
- Free in house design support available
- Meets new Part F regulations
- Fully SAP certified
- Full ducting, controls and accessories available
- CIBSE accredited CPD courses available



A manufacturer you can BUILD a relationship with....



Decentralised Mechanical Extract Ventilations (dMEV)

The Titon Ultimate® dMEV decentralised mechanical extract fan meets all of the new performance requirements. It provides extremely low noise levels, as low as 10 dB(A) and gives you that extra reassurance and peace of mind for your ventilation needs.

- Low specific fan power down to 0.11 W/l/s
- Airflow up to 30 l/s (108 m³/h)
- Eligible for Energy Compliance Obligation (ECO) fourth iteration funding
- Extremely low running costs
- Constant flow to guarantee ventilation performance
- 3 configurable speed options (Trickle, Boost and High Boost)
- CIBSE accredited CPD courses available



A manufacturer you can BUILD a relationship with....





894 The Crescent, Colchester Business Park, Colchester, CO4 9YQ

Tel: +44 (0) 1206 713800

Email: ventsales@titon.co.uk **Web:** www.titon.com/uk