

## Installation of Comfotube within main structure (compliments of Zehnder Germany)

Date: 29 April 2015

Typical Slab thicknesses            450mm – 650mm

Typical Pour thickness            160mm – 240mm

### Key requirements for success

- 1) System planning at an early stage
- 2) Design Freeze for apartment layouts
- 3) Early ordering of key first fix components
- 4) Zehnder on-site technical support

### Typical Installation Pictures

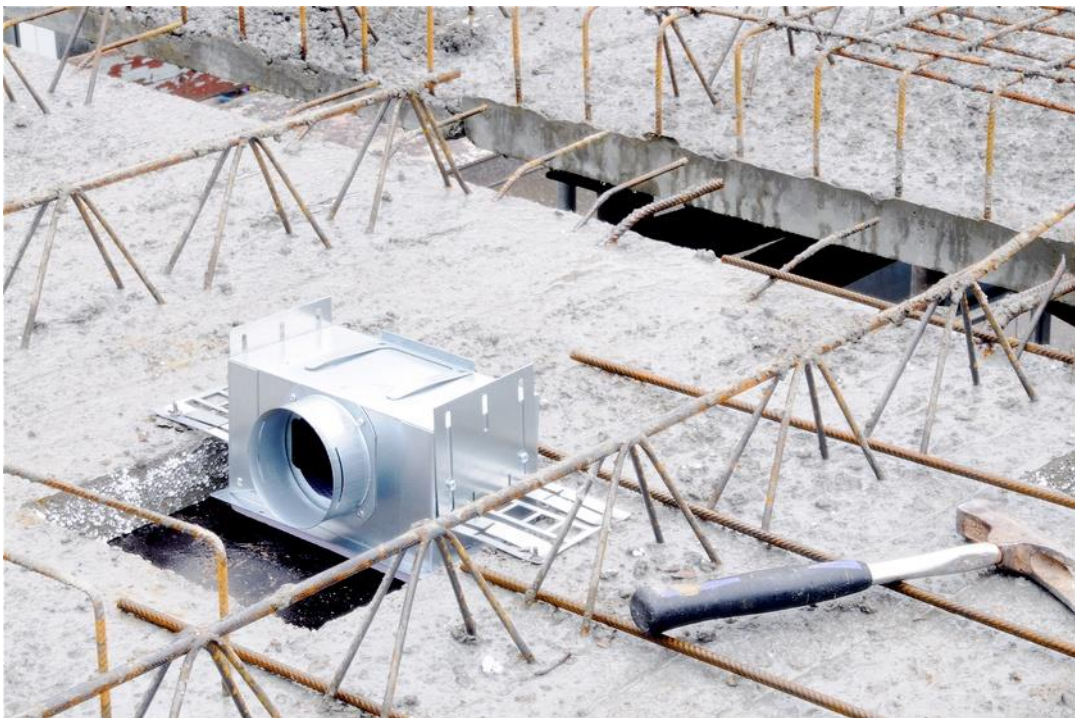
- 1) First fix Installation of Comfotube. Secured to bars using cable ties



2) Taking the most economical route to the rooms being served



3) Pre-formed holes for the grille housings to be pre-installed. 125mm diameter spigot connects to rigid pipe to ceiling grille (cut to length)





- 4) Visually check to ensure all ductwork is secured in place, no damage, all gasket seals have been installed and all grille housings are aligned.



- 5) Underside of Slab showing 2 x 10 port manifolds awaiting final connection of comfowell silencer/manifold. For Vireo, this will be a 6 port manifold.



